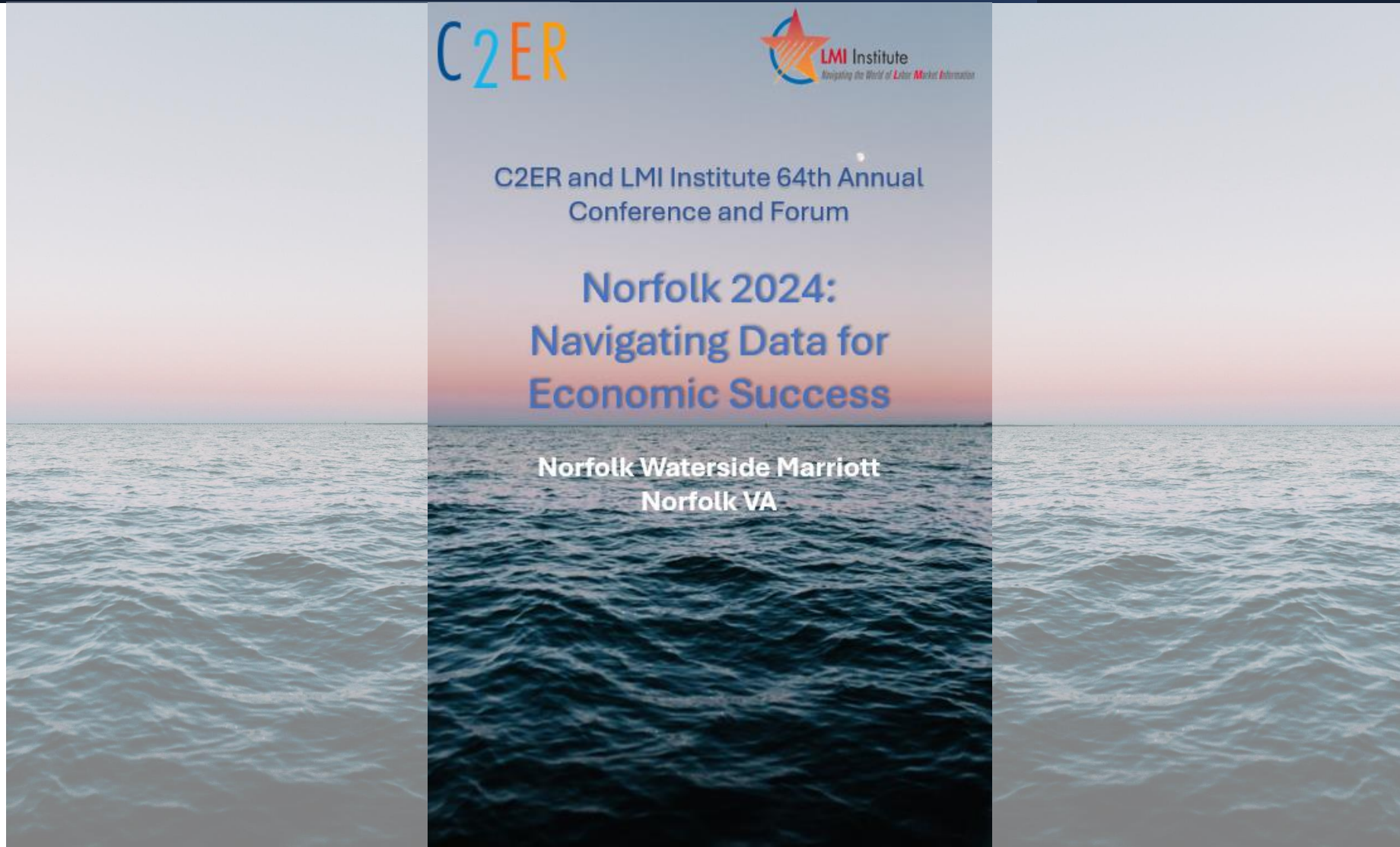


Support Packages for the C2ER/LMI Institute Annual Conference



Support the C2ER/LMI Institute Annual Conference

WHY OUR NETWORK?

The C2ER network represents all aspects of U.S. community, economic, and workforce development, namely government and nonprofit decision makers and researchers.

Our event is the perfect opportunity to:

- **Get acquainted** with this network's challenges, needs, and interests.
- **Build partnerships** with economic development and workforce professionals who supply data to support investments.
- **Promote the benefits** of your products and services to top-level contacts and decision makers.
- **Show your company's support** of skilled-workforce training and research, economic development planning, and growth!

WHY OUR CONFERENCE?

The C2ER Annual Conference is held in conjunction with the LMI Annual Forum, creating the premier national event for economic development researchers and labor market information analysts.

Our annual conference and forum provides an ideal venue for exposure to top-level economic development research practitioners from around the U.S. We deliver attention to our contributors through recognition of expertise, products, and services through specific events at the Conference, and companion activities held virtually before and afterwards.

Why register early?

Early sponsorship means early exposure to our registrants as they connect through our web properties, event communications, and on-site branding.

We thank you and appreciate your support!

VALUE PROPOSITION

Organizations and companies who choose to sponsor C2ER/LMI Institute:

- **Contribute to improvements** economic development and workforce information researchers make in their regions and communities.
- **Align with two national associations** targeted at driving economic and workforce development policy.
- **Reach national markets** through C2ER and LMI Institute's core audience of c-level professionals via their vision, mission, and initiatives.
- **Option to scale-up your contribution** with a tax-deductible donation to a national research and technical assistance nonprofit.

C2ER/LMI Institute Annual Conference Support Packages

\$3,500	Discounted Group Rate/ Conference Supporter	<ul style="list-style-type: none"> • Conference Only registrations for 5 attendees, includes sessions, meals, and events. (Does not include registration to the training classes.) • Your organization logo listed as a supporter of the C2ER and LMI Institute Annual Conference on conference materials and webpage
\$4,000	Daily Wi-Fi Sponsor (3 available)	<ul style="list-style-type: none"> • Signage as the Wi-Fi sponsor of the day • <u>Conference Only</u> registrations for 2 attendees, includes sessions, meals, and events.
\$4,000	All Day Beverage Sponsor (3 available)	<ul style="list-style-type: none"> • Branded signage at the drinks station for the day with coffee, tea, and soft drinks • Signage as the drinks sponsor of the day for the conference • <u>Conference Only</u> registrations for 2 attendees, includes sessions, meals, and events.
\$4,000	Conference Partner	<ul style="list-style-type: none"> • Exhibit space location (table, 2 chairs, wastebasket, Wi-Fi included) • Logo placement (pre- and post-conference communications) • Recognition on conference website (link to your home/product page) • <u>Conference Only</u> registrations for 2 attendees, includes sessions, meals, and events.

Customized packages are also available.

Please email Spencer Abrams (sabrams@crec.net), we are happy to discuss opportunities with you. We are open to other exciting ideas!

C2ER/LMI Institute Annual Conference Premium Support Packages

<p>\$10,000</p>	<p>Lunch Partner (SOLD OUT)</p>	<ul style="list-style-type: none"> • Branding of the lunch for the day as the sole supporter • 20-minute Lunch Keynote with a message and format determined in collaboration with C2ER/LMI Institute conference committee • Introduce the afternoon keynote speaker/panel • Sponsored blog post on C2ER/LMI Institute website and newsletter format determined in collaboration with C2ER/LMI Institute • Exhibit space location (table, 2 chairs, wastebasket, free Wi-Fi included) • Logo on Bi-weekly update for 6 months • <u>Conference Only</u> registrations for 4 attendees, includes sessions, meals, and events.
<p>\$15,000 OR \$7,500</p>	<p>Exclusive Reception Sponsor (1 available) or Reception Co-sponsor (2 available)</p>	<ul style="list-style-type: none"> • Sole sponsor of a reception on Wednesday, June 13 • Branding around the reception • Logo placement (pre- and post-conference communications) • Recognition on conference website (link to your home/product page) • <u>Conference Only</u> registrations for 4 attendees, includes sessions, meals, and events.
<p>\$30,000</p>	<p>Conference Co-Sponsor (1 available)</p>	<ul style="list-style-type: none"> • Sole sponsor of the conference co-branded with C2ER and LMI Institute • Logo on all name badges and recognition signage around the conference • Invitation for two to attend the joint board reception • Logo placement on conference website (link to your website) • <u>Conference Only</u> registrations for 5 attendees, includes sessions, meals, and events.

Customized packages are also available.

Please email Spencer Abrams (sabrams@crec.net), we are happy to discuss opportunities with you. We are open to other exciting ideas!